

Chorley
Council

Planning
Committee Meeting

06 December 2022



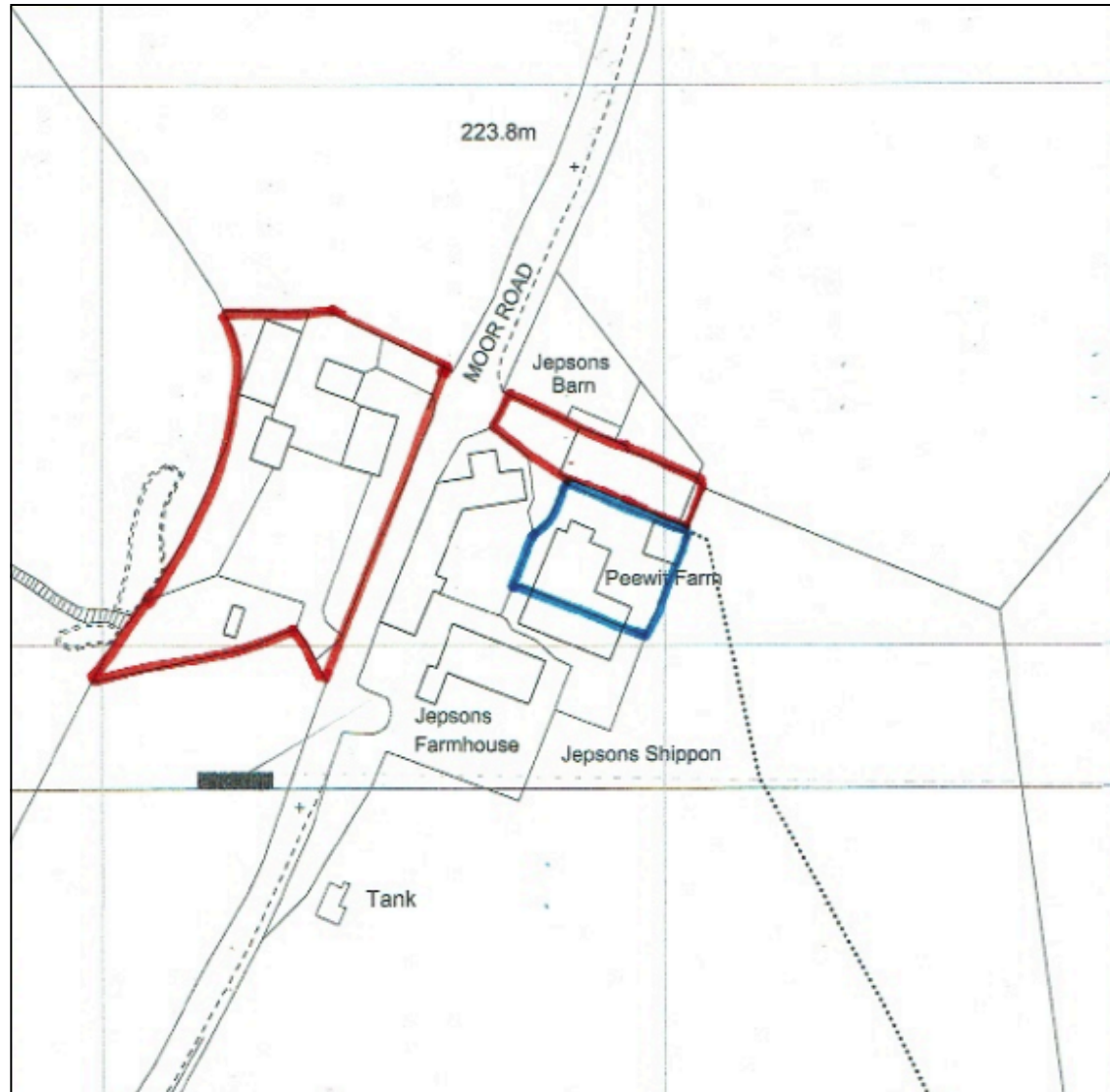
Item 3d

22/01070/FUL

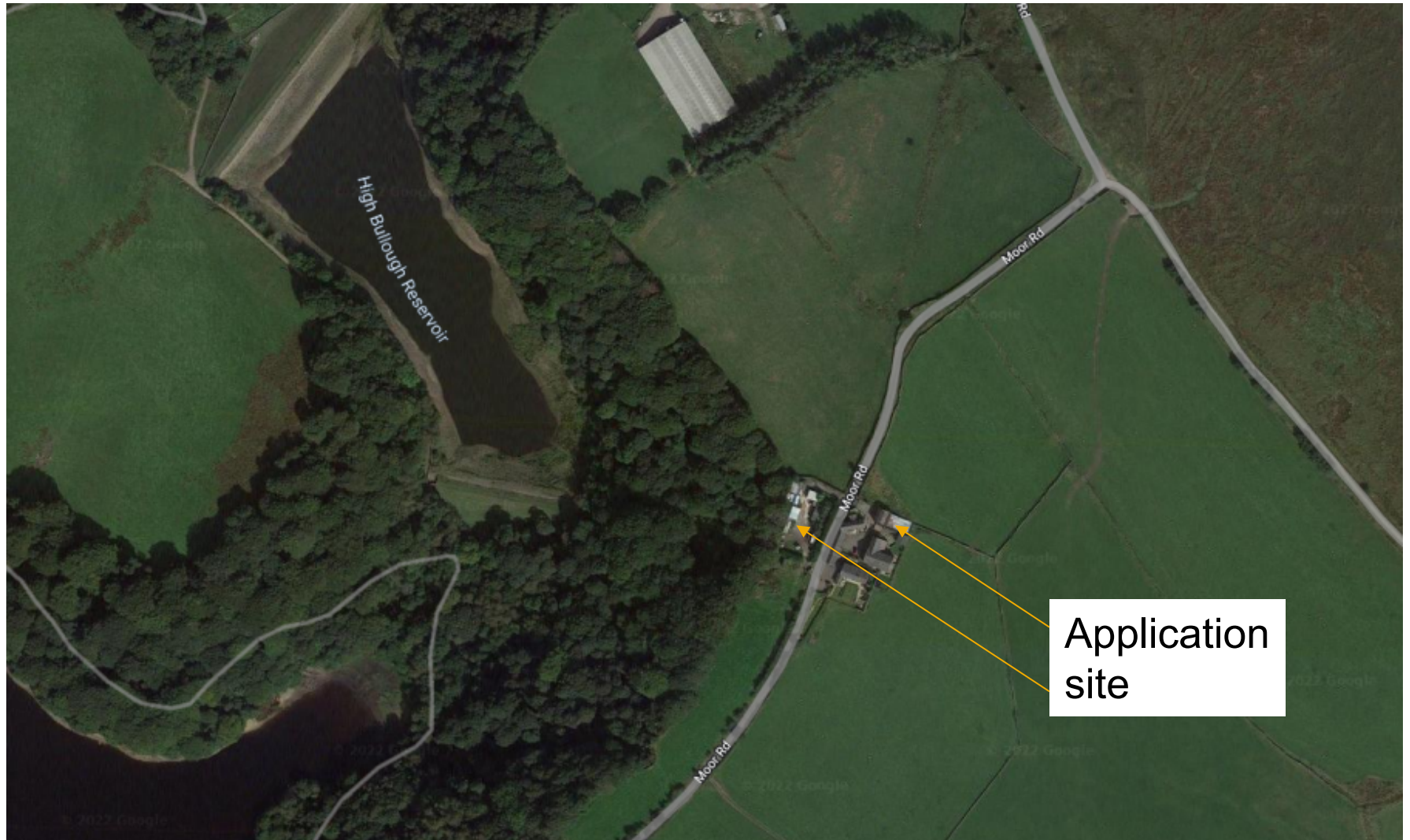
Peewit Farm, Moor Road, Anglezarke, Chorley

Erection of three detached dwellinghouses following demolition of existing workshop and storage buildings

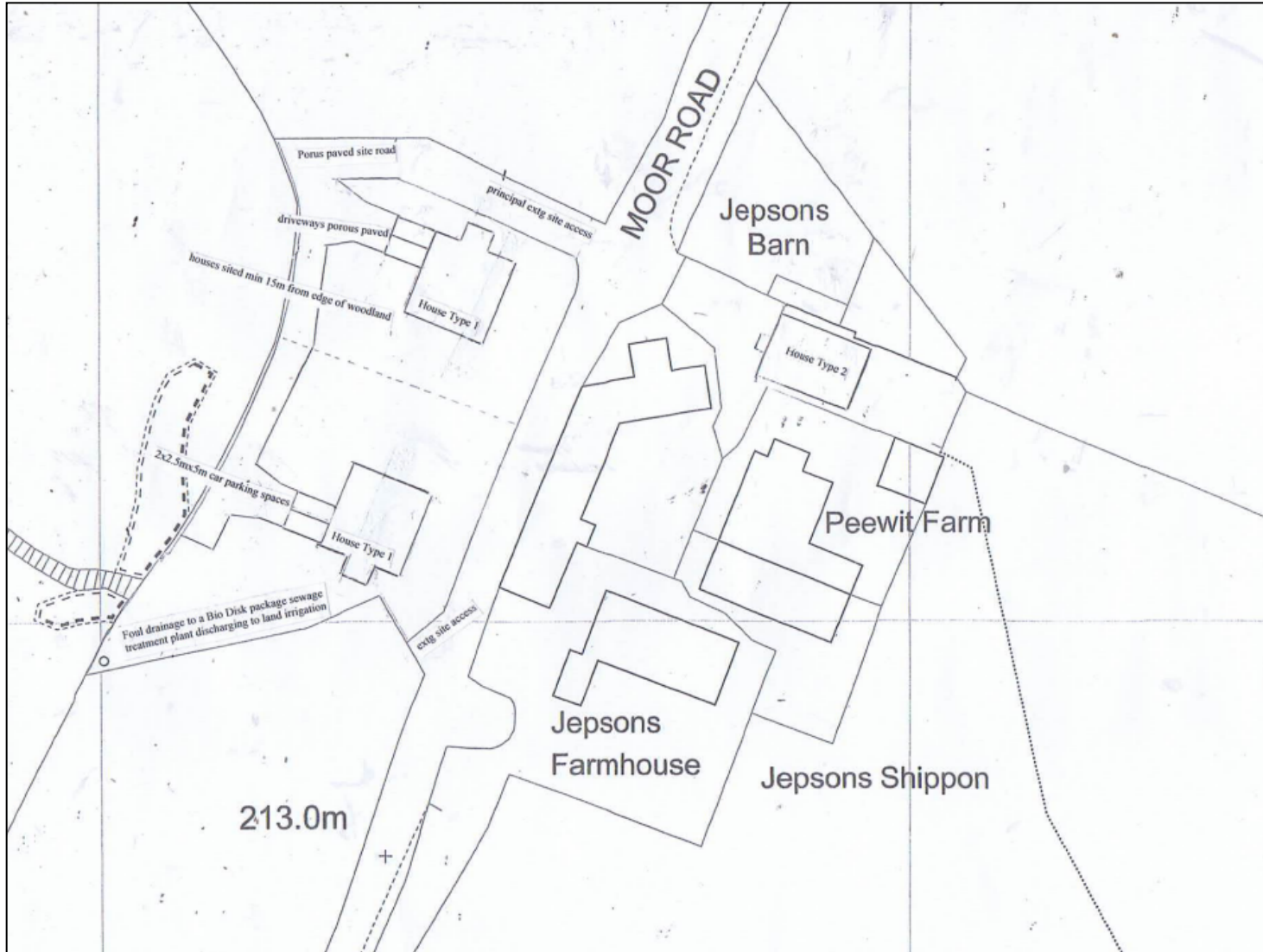
Location plan



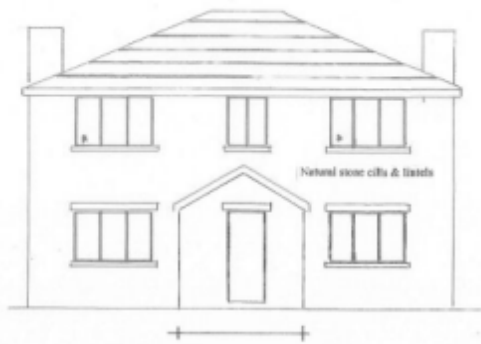
Aerial photo



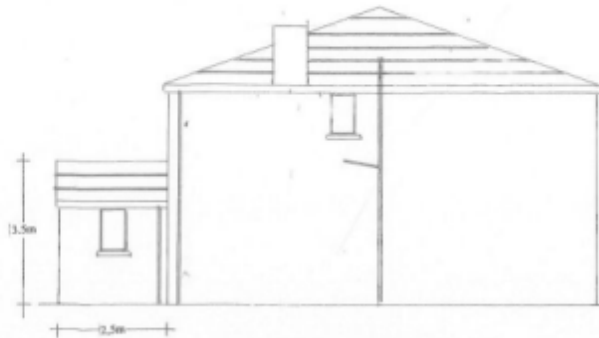
Proposed site plan



House Type 1



Prop Front Elev



Prop Right Elev



Prop Left Elev



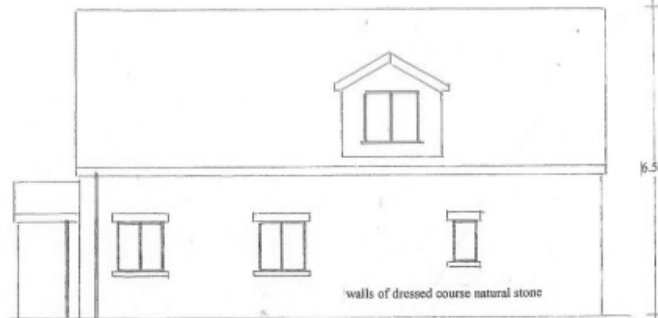
Prop Rear Elev

CHORLEY COUNCIL	
DEVELOPMENT CONTROL	
REC'D	11 OCT 2022
FILE	
ACK'D	
ATTN OF	
COPIES TO	

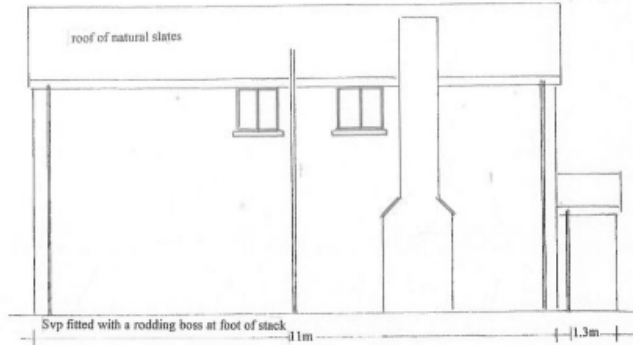
House Type 2



Prop Front Elev



Prop Right Elev



Prop Left Elev



Prop Rear Elev

CHORLEY COUNCIL	
DEVELOPMENT CONTROL	
REC'D	11 OCT 2022
FILE	
ACK'D	
ATTN OF	
COPIES TO	

Site photo



Site photo



Site photo



Site photo



Site photo



Moor Road looking north



Moor Road looking south

